



LED Replacement Programme

Cromhall Parish

www.southglos.gov.uk



Who are we?

Ryan Brown

Senior Project Engineer (Lighting)

Andrew Porter

Street Lighting Manager

James Hare

LED Technician

Introduction

South Gloucestershire Council (SGC) needs to make significant revenue savings and reductions in CO₂ emissions over the coming years.

LED lighting, due its reduced energy consumption and maintenance requirements, plays a crucial role in contributing to these savings.

What are we doing?

10yr project – 2014 until 2024
30,000 lanterns - 3,000 a year

From this:



To this:



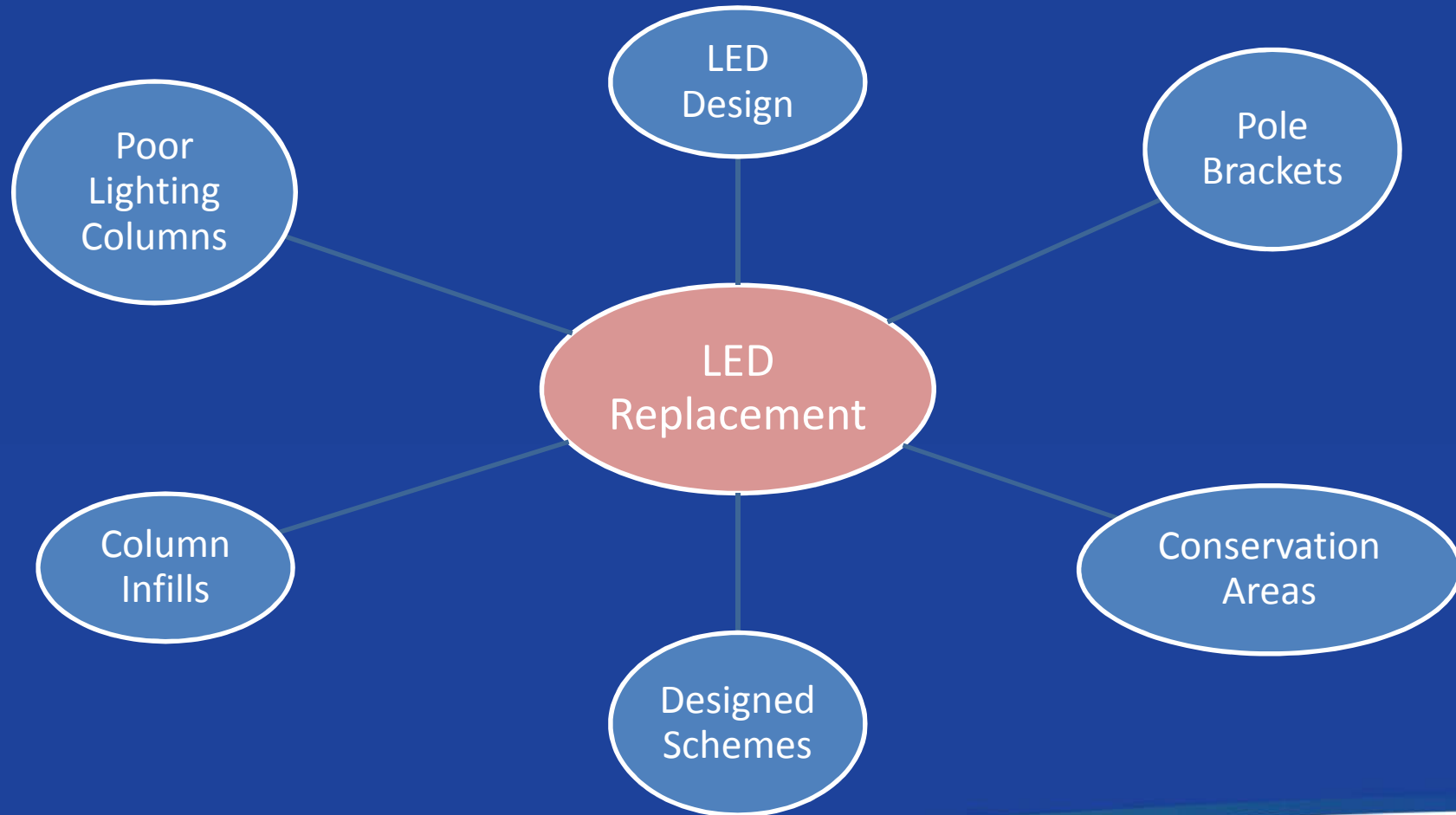
Annual lantern evaluation & tender

What is the LED Replacement?

- Like for like replacement
- Design each road - aiming for British Standard
- All-night lighting with dimming:

Time Period	Light Output
35 lux to 11:00 PM GMT	75%
11:00 PM GMT to 06.00 AM GMT	50%
06:00 AM GMT to 18 lux	75%

More than just LED...



The Good, the Bad and the Ugly...

Pros

- Reduced maintenance
- Dimming and trimming
- Reduced 'sky-glow'
- Up to **70%** reduction in energy & CO₂ consumption
- Direct light source

Cons

- Different appearance
- Large capital investment

What will it look like?

Before



After



Pictures taken from Charfield installation.

What will it look like?

Before



Pictures taken from Bradley Stoke installation.

After



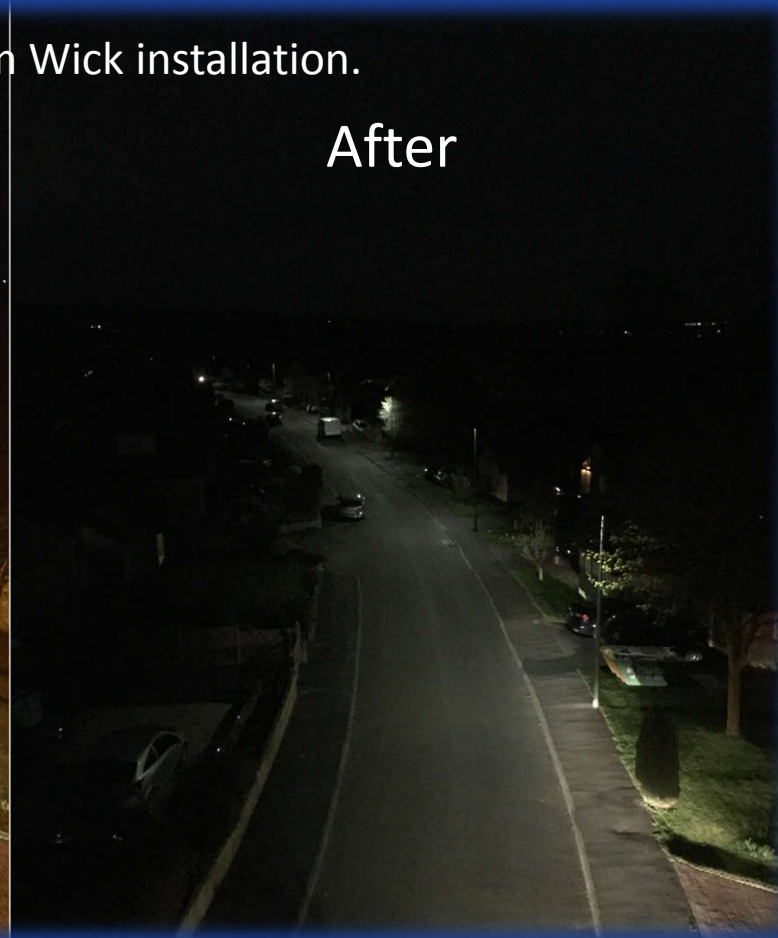
What will it look like?

Pictures taken from Wick installation.

Before

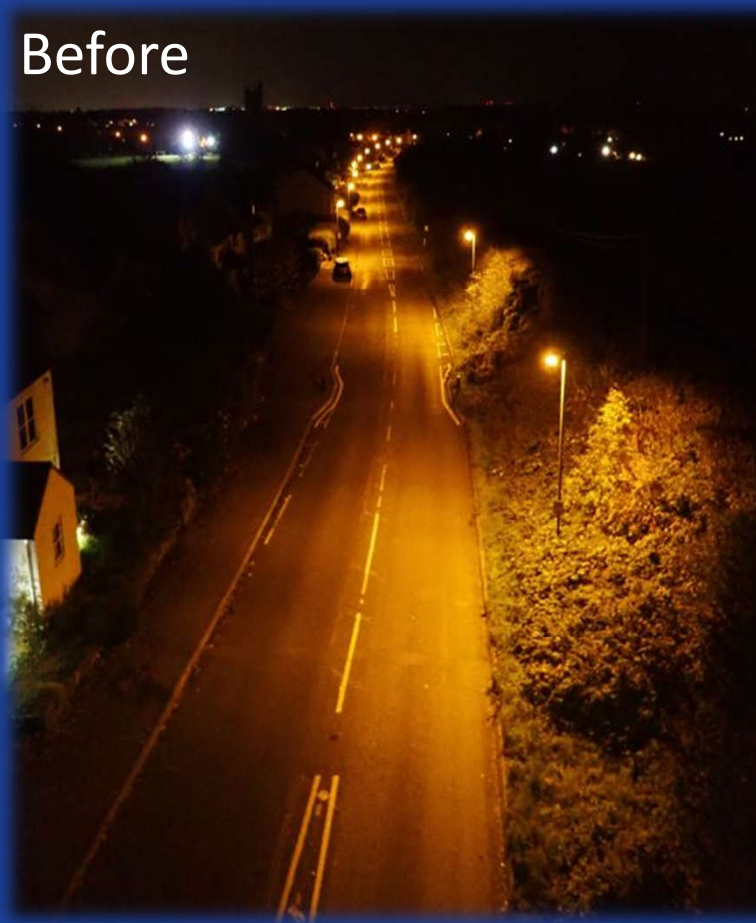


After

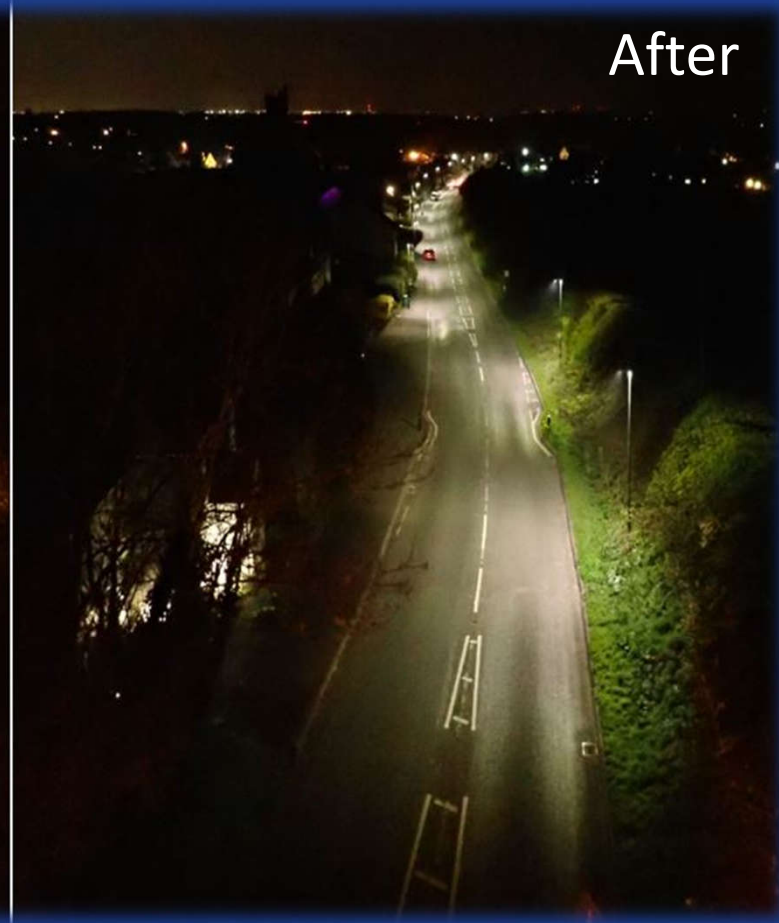


What will it look like?

Before



After



Pictures taken from Westerleigh installation.

Order of Works

1 - A Roads

Biggest Wattage = Biggest Savings
Highly Visible Roads

2 – Parish by Parish

Follow Maintenance Regime
Reduces Revenue Costs

Changed so far...

Trial – July '13

- Charfield

Year 1 – 14/15

- A38 (Falfield to Filton)
- Refuge Beacons
- Hanham
- Industrial estates
- A4174

Year 2 – 15/16

- A420
- A432
- A403
- A4018
- A431
- Cribbs Causeway
- Bradley Stoke (part 1)

Year 3 – 16/17

- Bradley Stoke (part 2)
- Oldland Parish
- Siston Parish
- Wick and Abson Parish

Year 4 – 17/18

- Woodstock
- Kings Chase
- Staple Hill
- Rodway

Year 5 – 18/19

- Bitton Parish
- Emersons Green Parish
- Westerleigh Parish

Year 6 – 19/20

- Pucklechurch Parish
- Downend & Bromley Heath Parish
- Winterbourne Parish
- Frampton Cotterell Parish

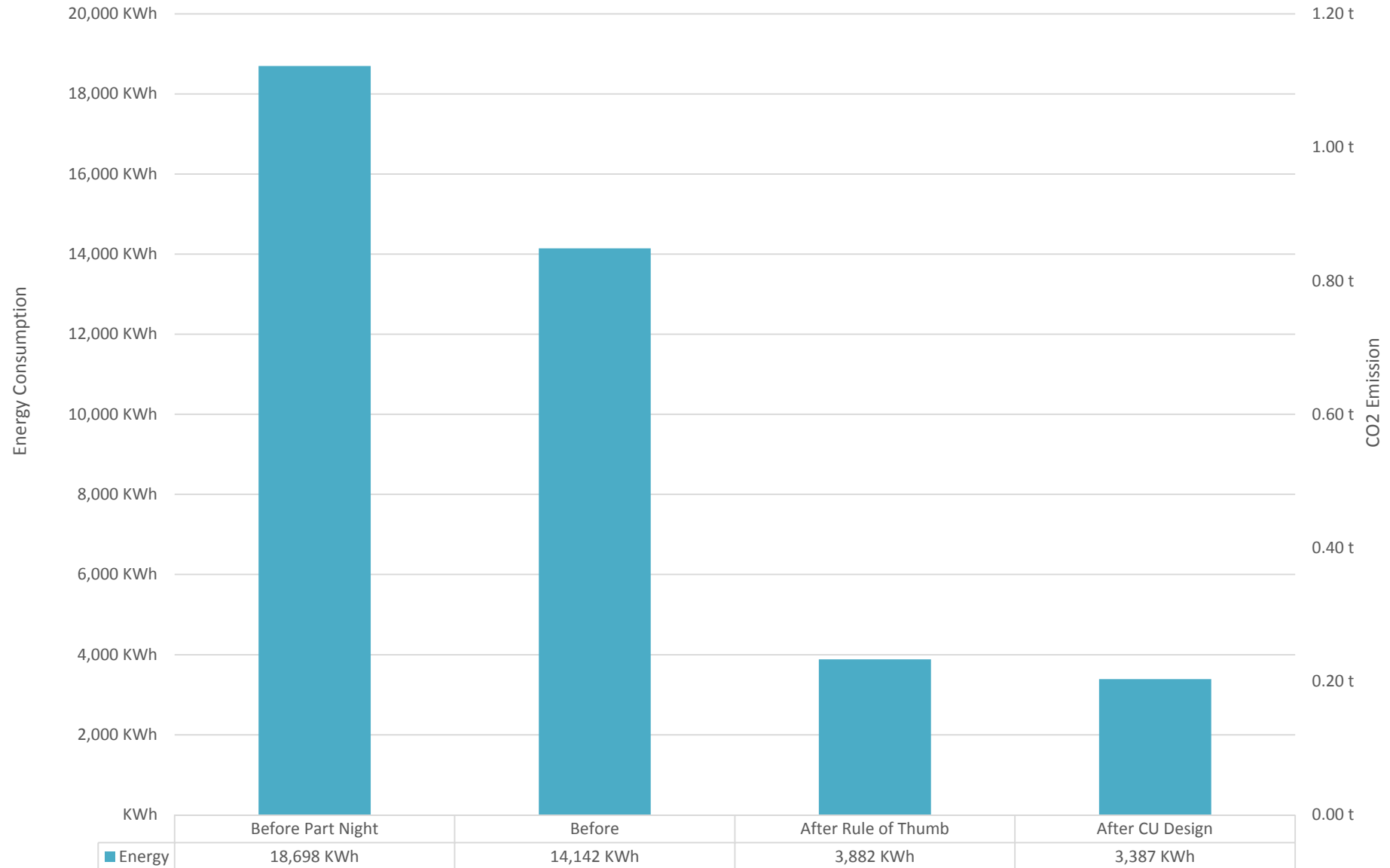


Areas for Year 7 – 2020/21

- | | | |
|------------------------------|--------------------|---------------------|
| 1. Filton | 9. Tytherington | 18. Dyrham & Hinton |
| 2. Pilning & Severn
Beach | 10. Wickwar | 19. Doynton |
| 3. Olveston | 11. Iron Acton | 20. Cold Ashton |
| 4. Alveston | 12. Hawkesbury | 21. Marshfield |
| 5. Oldbury-upon-Severn | 13. Horton | |
| 6. Rockhampton | 14. Little Sodbury | |
| 7. Falfield | 15. Badminton | |
| 8. Cromhall | 16. Acton Turville | |
| | 17. Tormarton | |



What will it save in Cromhall?



When is it happening?

LED Installation Beginning in Aug / Sep 2020.

Lighting column infills and poor column works beforehand

May cause minor disruption.



Key Points

- Revenue savings
- Avg. 3,000 lanterns per year
- Up to 70% energy savings
- Like for like replacement
- 'All Night' lighting
- Direct light source
- Starting Aug / Sep 2020



Thank you for listening



Contact Us

ryan.brown@southglos.gov.uk
01454 863512

Or

andrew.porter@southglos.gov.uk

Or

www.southglos.gov.uk/LED